



Animal Cremation Systems

technical **description**

Two Stage Process: 1st stage (Primary Chamber) cremates the remains and produces combustible gases. 2nd stage Afterburner (Secondary Chamber) combusts the off-gases to eliminate smoke and minimize contaminants.

Controls: Integrated control panel with programmable logic control, supervisory control, monitoring, data acquisition and remote diagnostic capability. PC computer workstation optional.

Options: Cremains separation device, Continuous Emissions Monitoring System (CEMS), Scrubber, Overhead loading (with ECO Model only).

technical **specifications**

External Casing/Finish: 1/4" (0.6 cm) steel, sandblasted and coated with rust inhibiting and heat resistant paint.

Burners: Electronic auto spark, packaged industrial burners, secondary burners modulate.

Fuel Supply Options: Diesel, Fuel Oil, JP8, Natural Gas, Arctic Diesel, Propane.

Operating Temperature:

Primary Chamber: 1200°F (650°C) - 1560°F (850°C)

Afterburner: 1832°F (1000°C), with a 2 second retention time.

Power: Typically 3 phase, 120/208 V, 60 Hz. Other power supply options available.

advantages

- Ergonomic design allows for easy loading
- Mass or private cremation can be completed in the same system
- Low operating and maintenance costs
- Latest state-of-the-art technology meets strict environmental standards



capacities

CA Animal Cremator

Compact and Economical



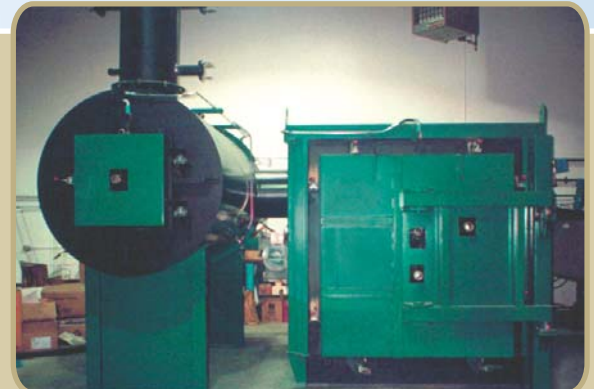
Model	Capacity Animals* lbs/batch
CA-50	300
CA-100	600
CA-600	1125

*Animals = 15lbs/ft³ assumed

Cycle time:
Burn cycle 5 hours followed by a 2 - 3 hour cool down.

ECO Model Cremator

Features a large door opening and "walk-in" chamber.



Capacity:
Range of models, custom sized starting at 800 lbs to 10,000 lbs per day. Can accommodate whole large animal carcasses, SRM and slaughterhouse remains.

Cycle time:
Burn cycle 6-12 hours followed by 6-10 hour cool down.

