



ECO WASTE SOLUTIONS



Remote Health Centre
Waste Solution

EMERGENCY

Hospital Oncológico
Havana, Cuba

the challenge

The Hospital Oncológico in Havana was looking for a safe, economical and environmentally responsible method for disposing of their medical waste.



The waste at the hospital was largely comprised of body fluids and other pathological waste materials. Incineration was considered because of its proven track record as a method to safely destroy medical waste. In order for the hospital to purchase and operate an incinerator, they required approval from both the Environmental Authority of Cuba and the Cuban Department of Health. □

our solution

Eco Waste Solutions worked with the Cuban Department of Health to develop a solution that would address the hospital's needs. The Eco Waste Oxidizer (ECO Model) was chosen to address their issues.



The hospital was given the approval to move forward after the Environmental Authority reviewed Eco Waste Solutions' air emissions reports and design data.

Since installation, the ECO Model completely destroys the medical waste and converts bio-hazardous and infectious material into safe inert ash. The on-site location has eliminated costs, risks and liability associated with the transportation of the medical waste. □

the results

Protection of Human Health

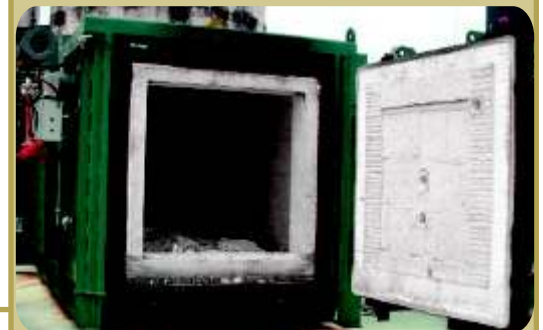
Eliminates the danger of untreated infectious medical waste entering the landfill sites and causing contamination reducing the overall public health risk. □

Environmental Protection

Operates in a controlled consistent manner that ensures the cleanest air emissions possible. □

Cost Reduction

Reduced the hospital's costs of storing, transporting and disposing of infectious materials. □



project information

Location: Havana, Cuba
Model: ECO 1TN
Capacity: 1100 kg per day
Waste Type: Medical Waste
Installation: 2001

ECO WASTE SOLUTIONS □

5195 Harvester Road - Unit 14
Burlington, ON Canada L7L 6E9 □

T 905.634.7022
F 905.634.0831 □

info@ecosolutions.com
www.ecosolutions.com □