



# Animal Cremation Systems

## technical **description**

**Two Stage Process:** 1st stage (Primary Chamber) cremates the remains and produces combustible gases. 2nd stage Afterburner (Secondary Chamber) combusts the off-gases to eliminate smoke and minimize contaminants.

**Controls:** Integrated control panel with programmable logic control, supervisory control, monitoring, data acquisition and remote diagnostic capability. PC computer workstation optional.

**Options:** Cremains separation device, Continuous Emissions Monitoring System (CEMS), Scrubber, Overhead loading (with ECO Model only).

## technical **specifications**

**External Casing/Finish:** 1/4" (0.6 cm) steel, sandblasted and coated with rust inhibiting and heat resistant paint.

**Burners:** Electronic auto spark, packaged industrial burners, secondary burners modulate.

**Fuel Supply Options:** Diesel, Fuel Oil, JP8, Natural Gas, Arctic Diesel, Propane.

**Operating Temperature:**

Primary Chamber: 1200°F (650°C) - 1560°F (850°C)

Afterburner: 1832°F (1000°C), with a 2 second retention time.

**Power:** Typically 3 phase, 120/208 V, 60 Hz. Other power supply options available.

## advantages

- Ergonomic design allows for easy loading
- Mass or private cremation can be completed in the same system
- Low operating and maintenance costs
- Latest state-of-the-art technology meets strict environmental standards



## capacities

### CA Animal Cremator

Compact and Economical



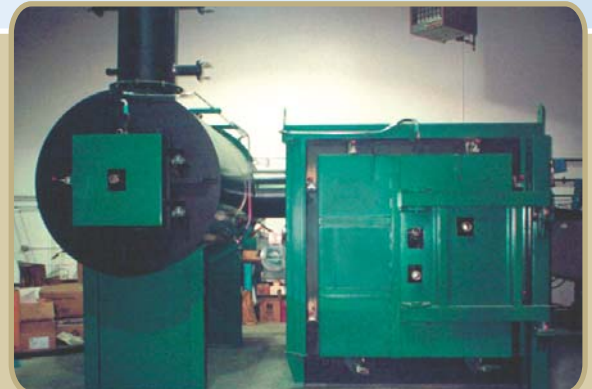
Model	Capacity
	Animals* lbs/batch
<b>CA-50</b>	<b>300</b>
<b>CA-100</b>	<b>600</b>
<b>CA-600</b>	<b>1125</b>

\*Animals = 15lbs/ft<sup>3</sup> assumed

**Cycle time:**  
Burn cycle 5 hours followed by a 2 - 3 hour cool down.

### ECO Model Cremator

Features a large door opening and "walk-in" chamber.



**Capacity:**

Range of models, custom sized starting at 800 lbs to 10,000 lbs per day. Can accommodate whole large animal carcasses, SRM and slaughterhouse remains.

**Cycle time:**

Burn cycle 6-12 hours followed by 6-10 hour cool down.

